

Hosanna Filio David à4

T. L. da Victoria
(1540 - 1611)

C
Ho - san - na, Ho san - na fi - li - o Da - vid. Be - ne -

A
Ho - san - na, Ho - san - na fi - li - o Da - vid. Be -

T
Ho - san - na, Ho - san - na fi - li - o Da - vid. Ho - san - na.

B
Ho - san - na, Ho - san - na fi - li - o Da - vid. Ho - san - na fi - li - o Da -

8
dic - tus qui ve - nit in no - mi - ne Do - mi - ni. Ho -

ne - dic - tus qui ve - nit in no - mi - ne Do - mi - ni. Ho - san -

Be - ne - dic - tus qui ve - nit in no - mi - ne Do - mi - ni. Ho - san -

vid. Be - ne - dic - tus qui ve - nit in no - mi - ne Do - mi - ni. Ho - san -

15
- san - na in ex - cel - sis, Ho - san - na, Ho - san - na

- na, Ho - san - na in ex - cel - sis, Ho - san - na, Ho - san - na

- na in ex - cel - sis, in ex - cel - sis. Be - ne - dic - tus qui ve - nit in

- na, Ho - san - na, Ho - san - na in ex - cel - sis,

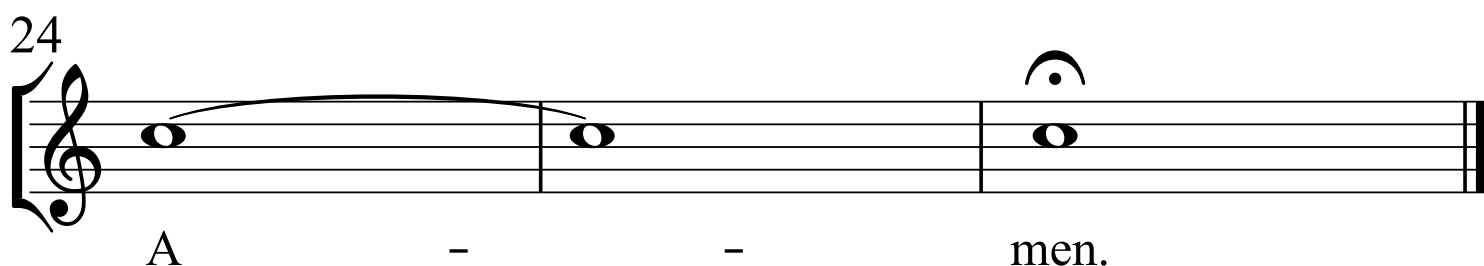
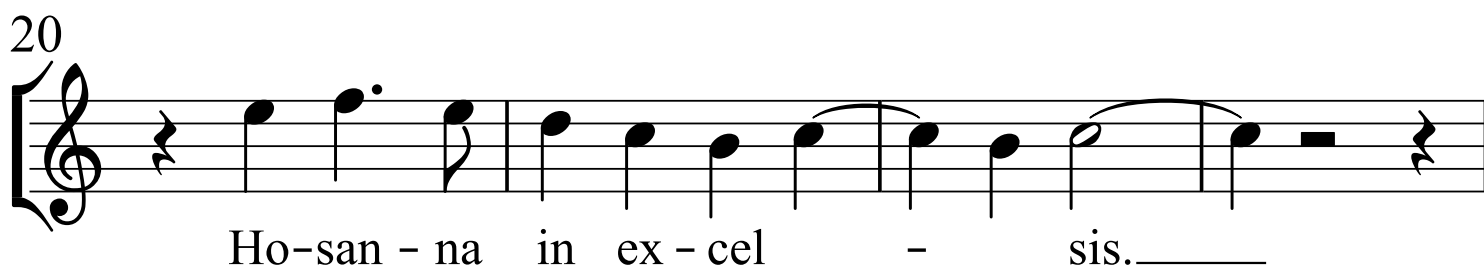
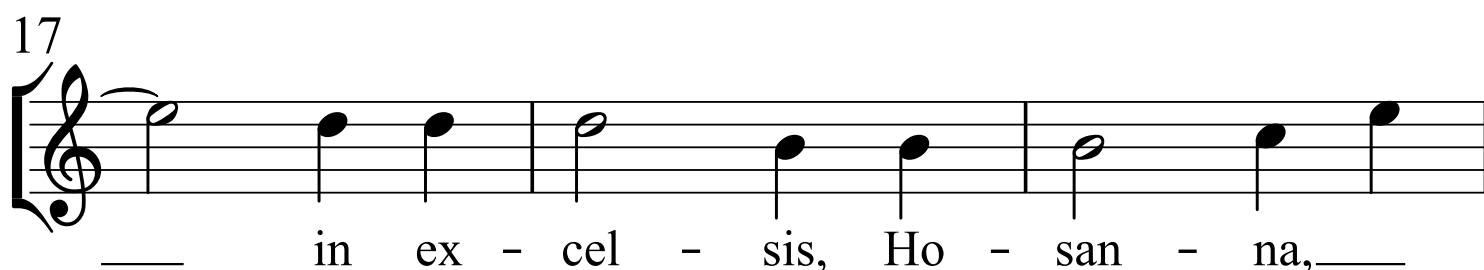
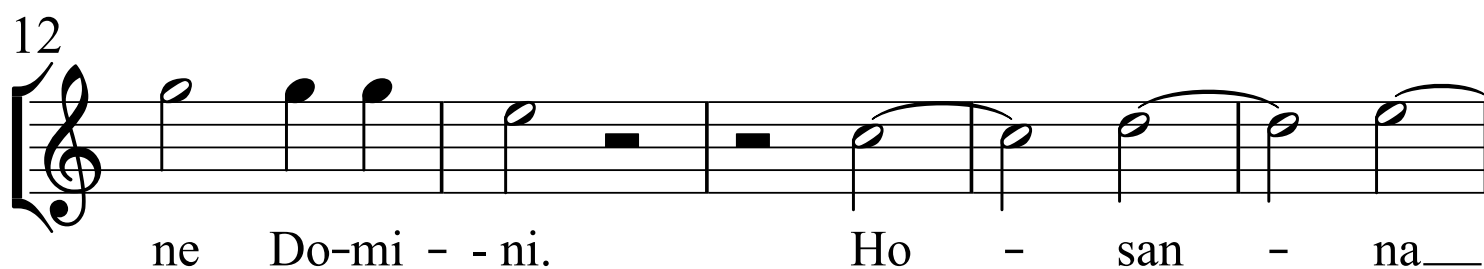
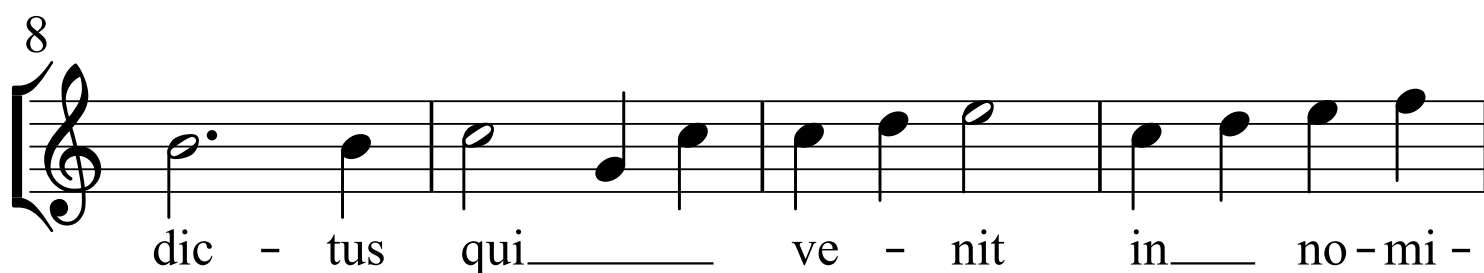
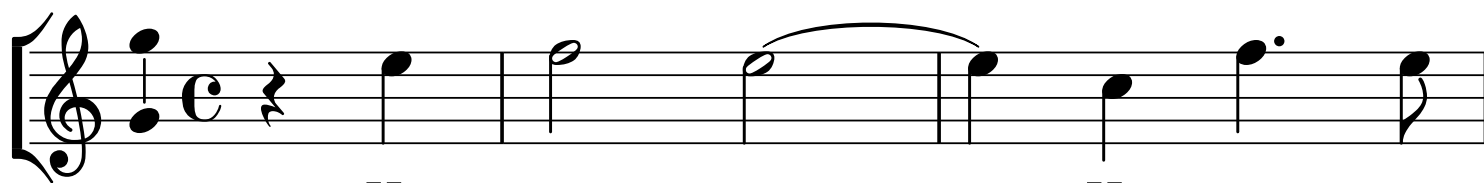
21
in ex - cel - sis. A - men.

in ex - cel - sis, Ho - san - na in ex - cel - sis. A - men, A - men.

no - mi - ne Do - mi - ni. Ho - san - na in ex - cel - sis. A - men.

Ho - san - na in ex - cel - sis. A - men, A - men.

Hosanna Filio David à4



ALTO

T. L. da Victoria
(1540 - 1611)

Hosanna Filio David à4

4 Ho - san - na, Ho - san - na

9 fi-li-o Da - vid. Be - ne -

12 dic - tus qui ve - nit in no -

15 - mi-ne Do - mi - ni. Ho - san -

19 - na, Ho - san - na in ex - cel - cis,

22 Ho - san - na, Ho - san - na in ex -

25 cel - sis, Ho - san - na in ex - cel - sis.

A - men, A - men.

TENOR

T. L. da Victoria
(1540 - 1611)

Hosanna Filio David à4

Ho - san - na, — Ho - san-na fi-li - o Da -

6
vid. Ho - san - na. Be - ne - dic - tus qui

10
ve - nit in no-mi-ne Do - mi - ni. Ho -

14
san - na in ex-cel - sis, —

17
— in ex - cel - sis. Be - ne-dic-tus qui ve - nit in

21
no - mi-ne — Do - mi - ni. Ho - san - na in ex -

24
cel - sis. A — men.

BASSO

Hosanna Filio David à4

T. L. da Victoria
(1540 - 1611)

